



Product Development: **Design** → Manufacturing → Logistics → **Business Model**

## DESIGN

- **Our team has expert level competence in**
  - Control & Automation
  - Power electronics
  - LED Luminaires
  - Solar products
  - Embedded micro-controller programming
  - Software development (web / mobile devices)
- **Integration:** Indian engineers have an innate ability to integrate products and software systems

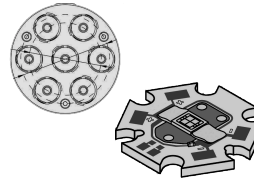
## BUSINESS MODEL

- We have developed and deployed several models for our products and services, such valuable commercial insight is provided to our clients & partners
- We develop products which can further retailed through our network across the world

## TURNKEY SOL.

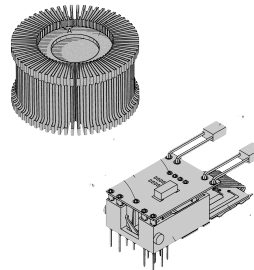
- We are **“Single Stop”** OEM solutions provider
- We **guarantee** most competitive value and quality

### Sourcing



- *Price optimization:* Local sourcing + manufacturing of critical components through our partners include heat sinks, PCB boards, assembly, plastics
- We source core components (LED Chips, lens) from the best to maintain ideal quality

### Manufacturing



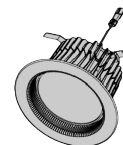
#### **Electronics**

- High precision, automated and rapid throughput electronics assembly
- Complex double sided / multilayer PCB assembly
- Lead Free, RoHS compliance

#### **Mechanical Components (Local)**

- Al. dye casting & extrusion
- In house: Sheet metal presses and injection molding

### Value added services



- *Testing:* functional, burn test
- *Quality:* QA / QC
- *Final Assembly:* Box build, cable & harness
- *Regulation:* Provide regulatory approvals (UL / CE / TUV)

# MANUFACTURING

## SHEET METAL



- Our fabrication unit offers one of the most comprehensive portfolio of Quality Services at unbeatable value.

150 ton press



### Key USP

- **Production** of complex components
- **Flexibility** to produce small to large
- **Experience** of over three decades in sheet metal production in the automotive sector

Hydraulic Press



### Mechanical Portfolio

- Recliners
- Exhaust Systems: single & twin tube, pipe diffusers, tail plate, Heat Shields (60K/month – 8 years)

Unit

Shop Floor



## ELECTRONICS



- We have developed an **EXCLUSIVE** set of services and products for LED Luminaire manufacturers



20K CPH, 30µ SMT



10 Zone reflow



- We have developed LED Products which are available for immediate commercialization
  - SMPS
  - Smart Drivers
  - Down lights
  - Street light management system

- We have designed the assembly line to provide BEST quality

- Our manufacturing is flexible and scalable for mixed size orders

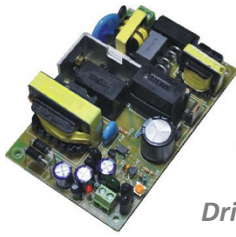
- We have optimized the ENTIRE manufacturing process to pass on the cost benefit to our clients

SMT Line

PTH Line



## Electronic Components



*Drivers / SMPS*



*BLDC Motor*



*Solar / battery charge controller*

## Off Grid Products



*Lanterns*



*Power Solutions*



*Solar Pumps*

## LED Luminaires



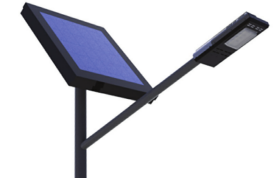
*Street Lights (20 – 150W)*



*Indoor Lights*



*Flood Lights (50 – 300W)*

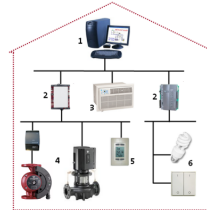


*Solar Street Lights*

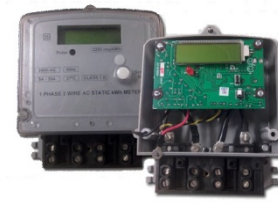
## Smart Solutions



*Low Cost SCADA*



*Energy Management Systems*



*Energy Meters*



*Off Grid Solutions*

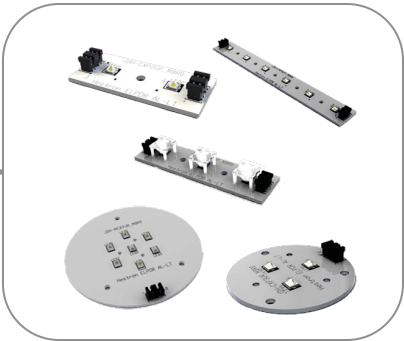
# Complete LED Portfolio:

## A: Components

LIGHT ENGINES

DRIVERS (AC)

SMPS / CONTROLS



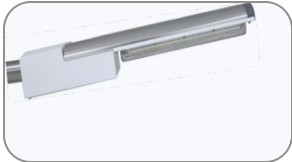
Open / Plastic / Metal

## B: Luminaires

RESIDENTIAL

COMMERCIAL

OUTDOOR

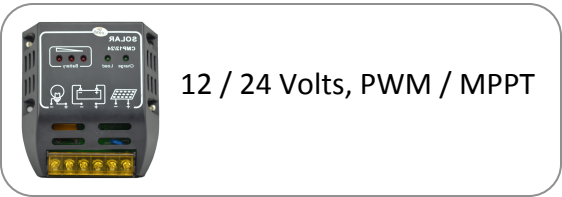


## C: Solar

OFF GRID LIGHT

DRIVERS (DC)

CHARGE CONTROLS



12 / 24 Volts, PWM / MPPT

## TEAM

**Nitin**

A financial expert, Nitin sought to fundamentally solve the energy infrastructure challenges by resolving the financial impediments in all ES offerings.

**Abi**

An engineer by training, Abi developed a portfolio of energy efficient products & services. He then established a design & manufacturing base in India

## Contact



**Corporate / Design**



**Manufacturing**

<b>Address</b>	1150 Sixth Avenue NY, NY	C-39 Focal Point – II Ludhiana, Punjab
<b>Phone</b>	+1.347.565.4630	+91.971.172.4596
<b>Fax</b>	+1.347.342.3148	+ 91.161.502.1090
<b>Email</b>	<a href="mailto:sales@Efficienados.com">sales@Efficienados.com</a>	



Our values are represented by our products & solutions and goal is to grow through healthy, long term partnerships.

- Loyalty**  
*We believe in mutual growth. This is reflected in our B2B partnerships as well as commitment to our end – users.*
- Quality**  
*We believe over time quality prevails over myopic decisions. We have infused this philosophy in our products also.*
- Innovation**  
*Long term growth comes through value creation. We therefore invest constantly in developing novel solutions as well as improving our existing line.*
- Performance**  
*An opportunity has a time value and we believe in participating in it without losing time. Therefore, timely performance is essential to our success.*